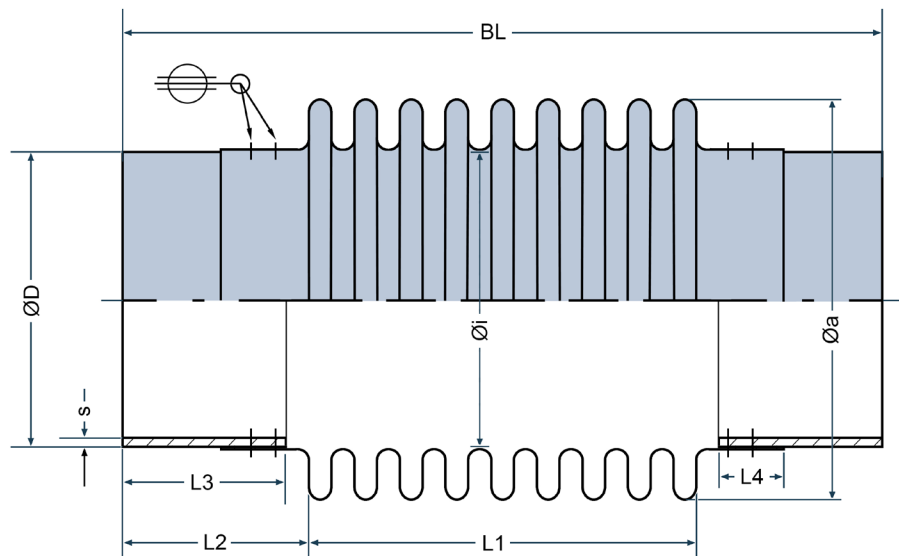
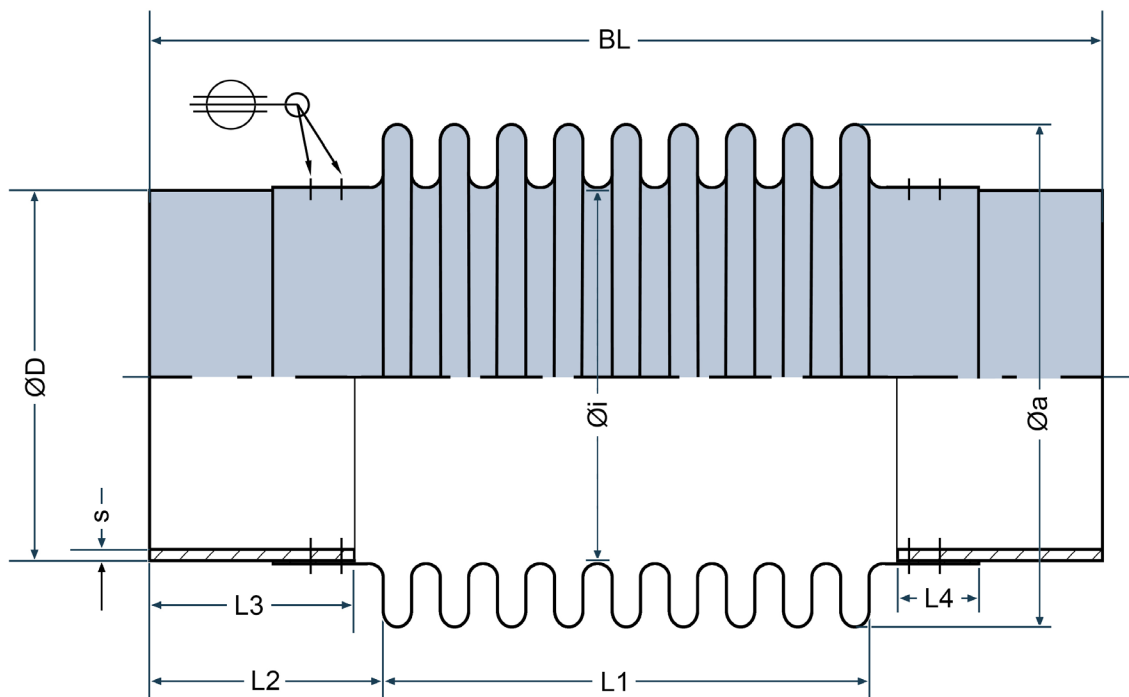


Bellows multi-ply made 1.4541
 Pipe nozzles made of 1.4541 roll seam welded
 suitable for axial or lateral movements
 WP 2,5 bar / WT +20°C / 1.000 LC



DN	50	65	80	100	125	150
BL	200 mm	200 mm	280 mm	240 mm	240 mm	240 mm
Ø D	60,3 mm	76,1 mm	88,9 mm	114,3 mm	139,7 mm	168,3 mm
s	2 mm	2 mm	2 mm	2 mm	2 mm	2 mm
Ø a	84 mm	105 mm	118 mm	141,5 mm	172,9 mm	205,5 mm
Ø i	63,1 mm	78,9 mm	92,1 mm	114,3 mm	139,7 mm	168,3 mm
L1	104 mm	100 mm	176 mm	140 mm	142 mm	126 mm
L2	48 mm	50 mm	52 mm	50 mm	49 mm	57 mm
L3	45 mm	48 mm	50 mm	47 mm	45 mm	55 mm
L4	18 mm	18 mm	18 mm	25 mm	25 mm	25 mm
axial	+/- 23 mm	+/- 30 mm	+/- 30 mm	+/- 33 mm	+/- 43 mm	+/- 44 mm
or lateral	+/- 5 mm	+/- 5 mm	+/- 17,5 mm	+/- 12,5 mm	+/- 13,5 mm	+/- 10 mm
Effective area	42,1 cm ²	66,0 cm ²	85,7 cm ²	128 cm ²	191 cm ²	273 cm ²



DN	200	250	300	400	500	600
BL	260 mm	260 mm	270 mm	330 mm	325 mm	300 mm
Ø D	219,1 mm	273 mm	323,9 mm	406,4 mm	508 mm	610 mm
s	2 mm	2 mm	2 mm	3 mm	3 mm	3 mm
Ø a	262,7 mm	320,6 mm	373,5 mm	464,4 mm	574 mm	678 mm
Ø i	219,1 mm	273 mm	323,9 mm	406,4 mm	508 mm	610 mm
L1	158 mm	132 mm	141 mm	162 mm	165 mm	172 mm
L2	51 mm	64 mm	64,5 mm	84 mm	80 mm	64 mm
L3	50 mm	60 mm	60 mm	80 mm	75 mm	60 mm
L4	25 mm	25 mm	25 mm	30 mm	30 mm	30 mm
axial	+/- 51 mm	+/- 48 mm	+/- 52 mm	+/- 52 mm	+/- 60 mm	+/- 65 mm
or lateral	+/- 11,5 mm	+/- 7,5 mm	+/- 7 mm	+/- 7 mm	+/- 6,5 mm	+/- 6 mm
Effective area	454 cm ²	689 cm ²	952 cm ²	1.484 cm ²	2.293 cm ²	3.250 cm ²